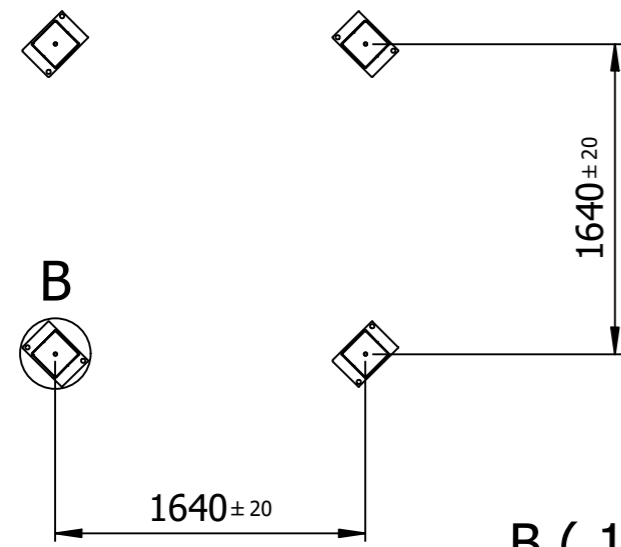
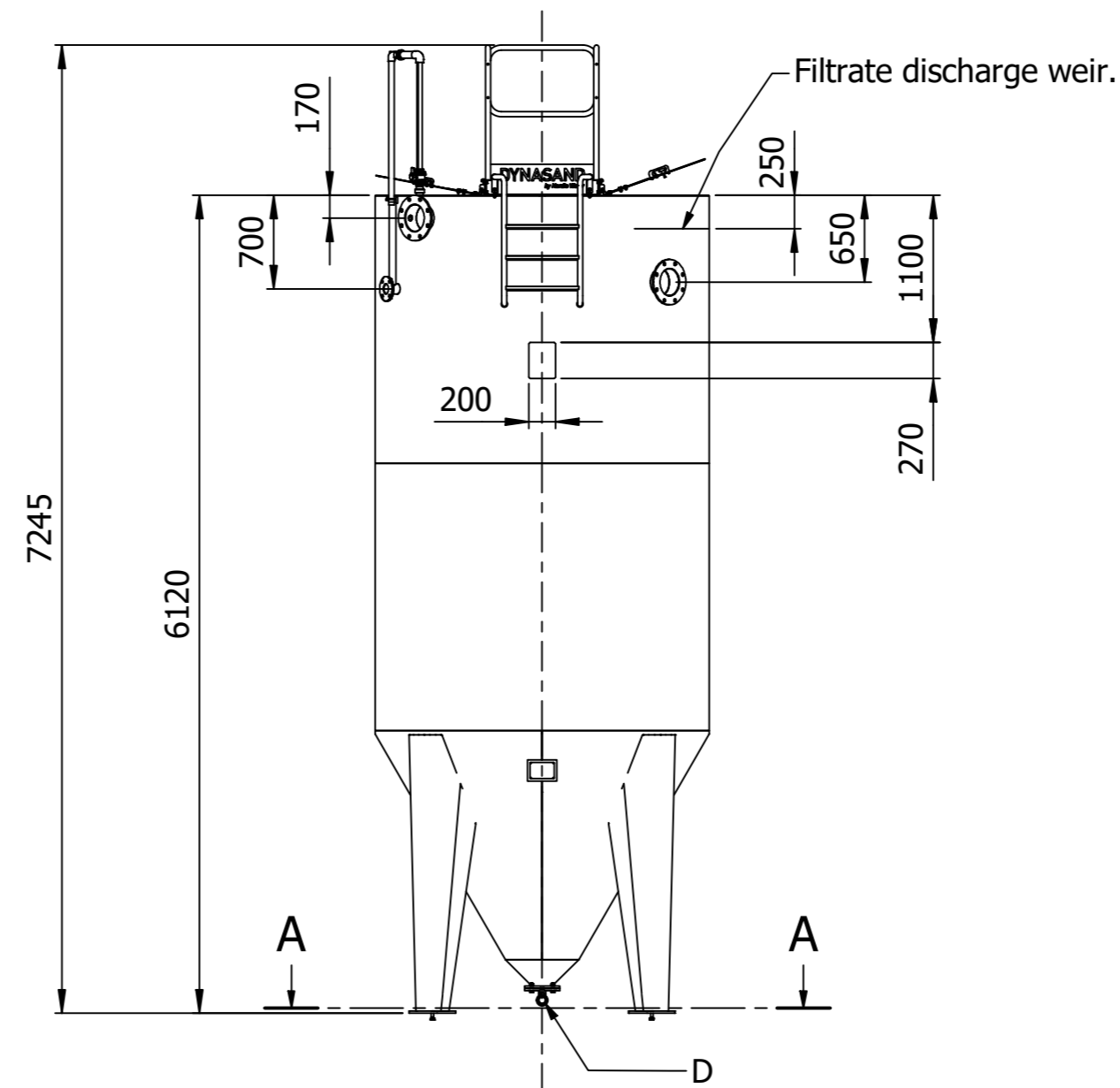
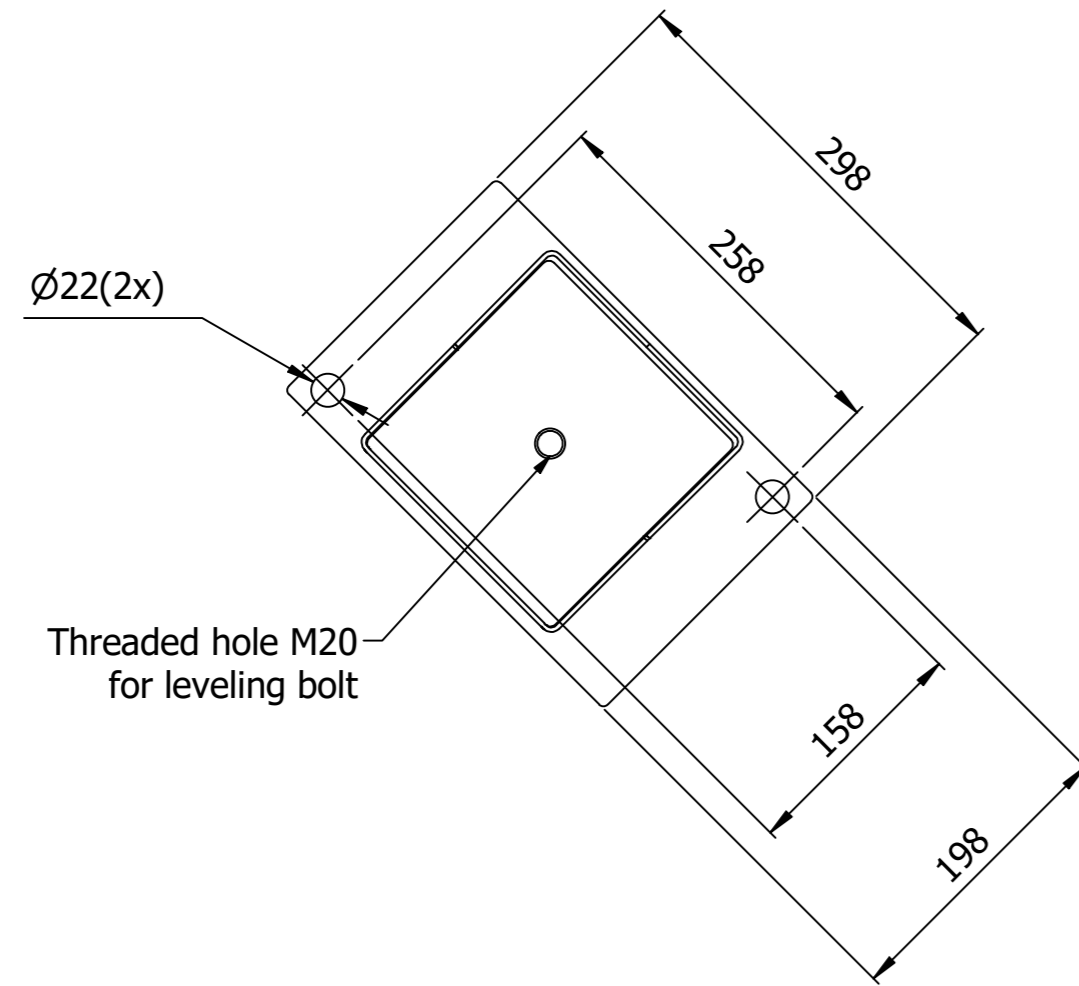


This design and drawing is the property of Nordic Water Products AB. Sweden and protected under international copyright law. The design and drawing is developed solely for use in a project where Nordic Water Products AB supplies the equipment shown and may not be copied, altered or used for any other purpose than this. Any misuse will be prosecuted.

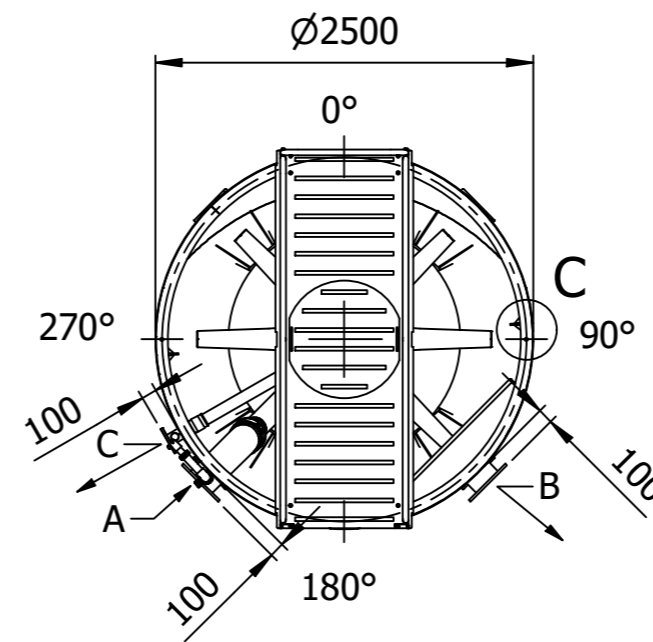
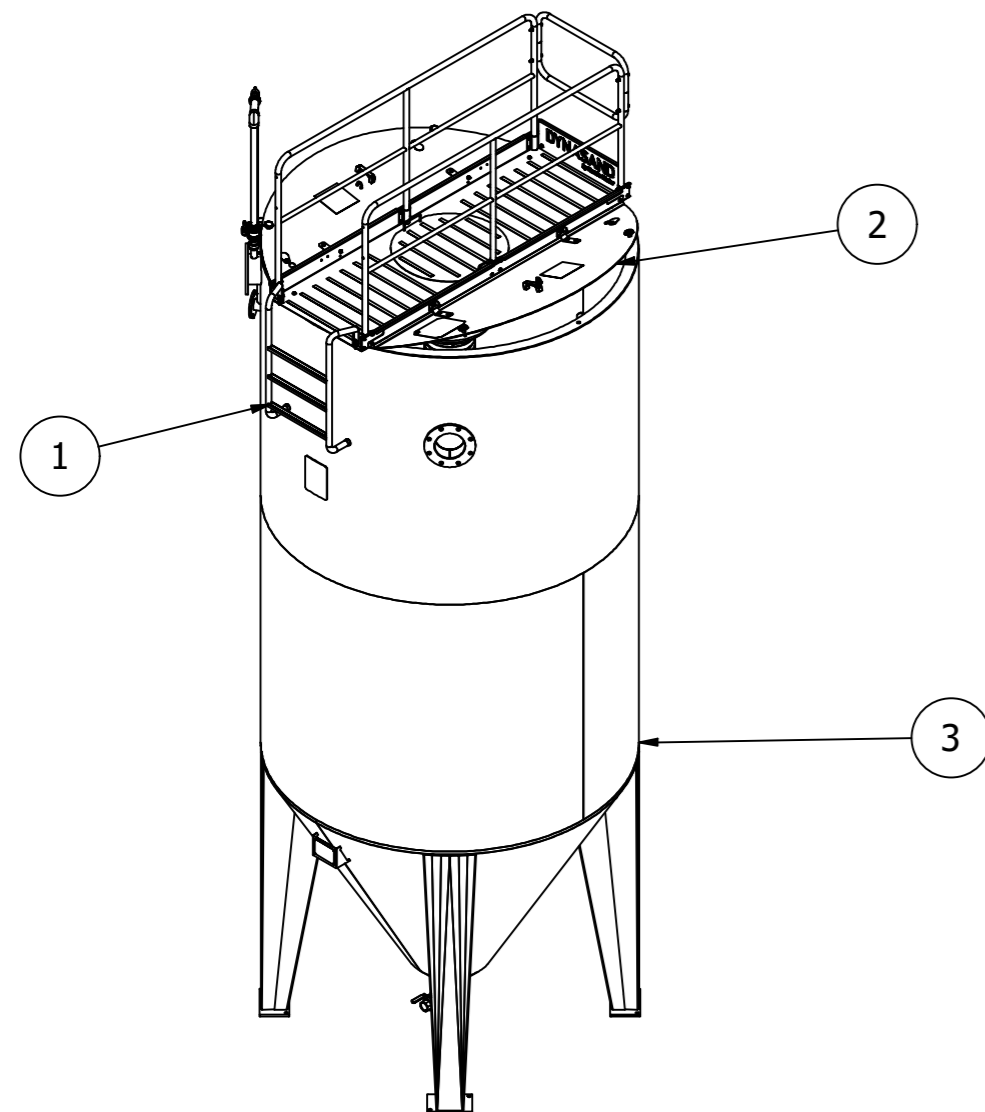
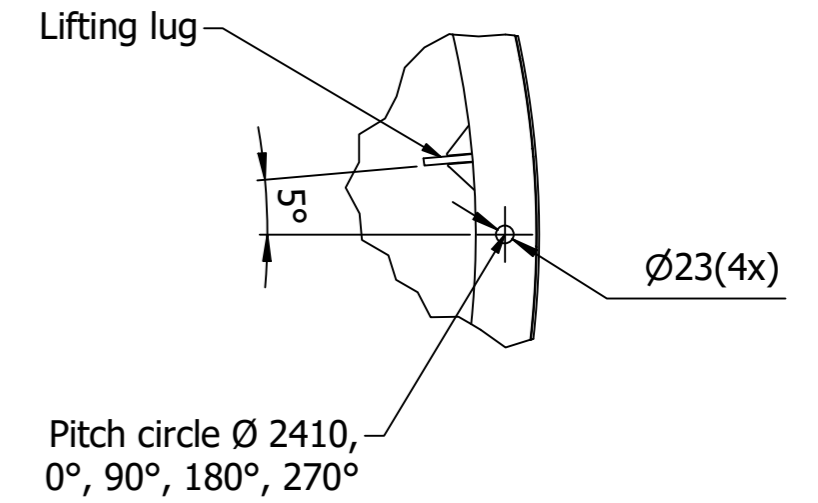
A-A (1 : 40)



B (1 : 5)



C (1 : 10)



NOTE
Subject to alteration without prior notice.

Dynasand Model					
Item	Qty	Description	Material	Dimension, etc	No. etc
3	1	Filter Assembly DS5000 Inlet Ø200, 2.0 Left			1012979

Options					
Item	Qty	Description	Material	Dimension, etc	No. etc
2	1	Lid DS5000			1014731
1	1	Ladder			26674

Type	H [mm]	Sandbed height [m]	Transport weight [m ton]	Sand volume [m³]	Weight in process [ton]
2.0	6120	2,0	2,0	13,1	35
Mark	Function	Angle	DN	Flanged drilled acc. to PN DIN / Ansi	
A	Feed	225°	200	10	2642 / 150 lb
B	Filtrate	135°	200	10	2642 / 150 lb
C	Reject	240°	65	10	2642 / 150 lb
D	Drain valve	180°	R2"		

NORDIC WATER	DynaSand DS5000	Drawn	Designed	Weight Kg
			NR	
Project	DynaSand 5000 2.0 Left	Date	Scale	
Customer		2019-03-13	1 : 50	
		Production Group	Assembly	
		Module	Dimensional Drawing	
	Drawing number	Revision	Sheet	
	396003	0	1 / 1	

Tolerances for linear and angular dimensions without individual tolerance indications acc. to SS-ISO 2768-1-mK. Other measures acc. to digital shape model. All welding according to ISO 5817:2007. Chamfer all sharp edges.